

# MSC IN ENVIRONMENTAL SCIENCES AND HUMANITIES

Warmly welcome!

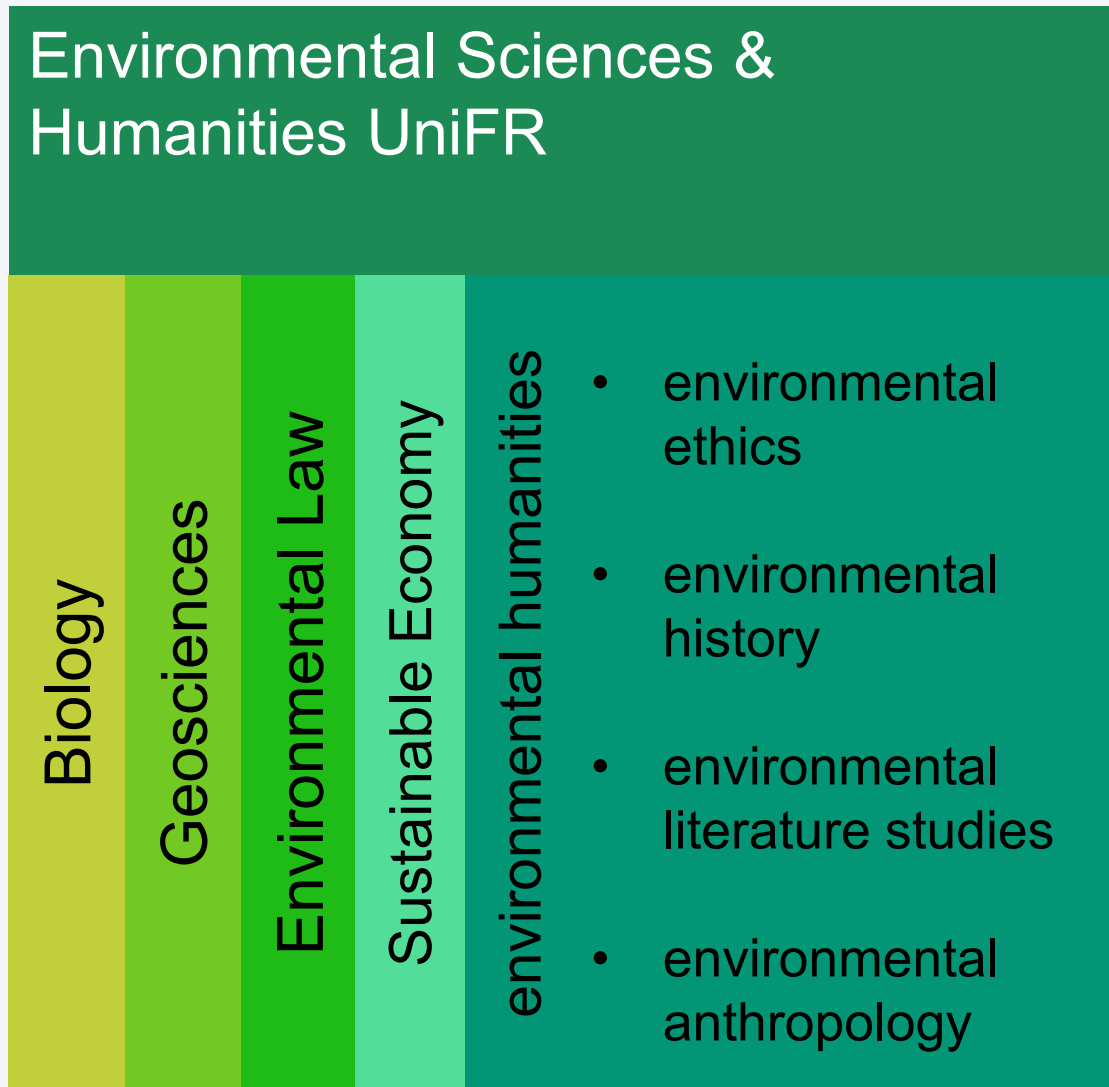


# THEIR SOLUTION DEMANDS SCIENCE & HUMANITIES

- To solve the environmental challenges of today a solid background in **sciences** is essential. We focus on **biology and geosciences**.
- Governance solutions to environmental challenges include not only **legal and economic** aspects but also...
  - value judgements
  - ethical dilemmas
  - historical developments

*This demands competences in the **humanities** and especially in **ethics and ethical decision-making**.*

# ENVIRONMENTAL HUMANITIES



- environmental humanities
  - are **part of the** environmental sciences.
  - mostly originate from **classical** disciplines of **the humanities**.
  - a relatively **young subject**.
  - have an **environmental-ethical** character at UniFR.
- There is a lot of **room for** definition and **design for** the subject.

# PROSPECTS

## Competences

- analytical thinking
- precise reasoning
- detecting the ethical implications of environmental practice
- general natural scientific, economic and legal knowledge concerning the environmental challenges of today
- specialise in the context of their Master thesis

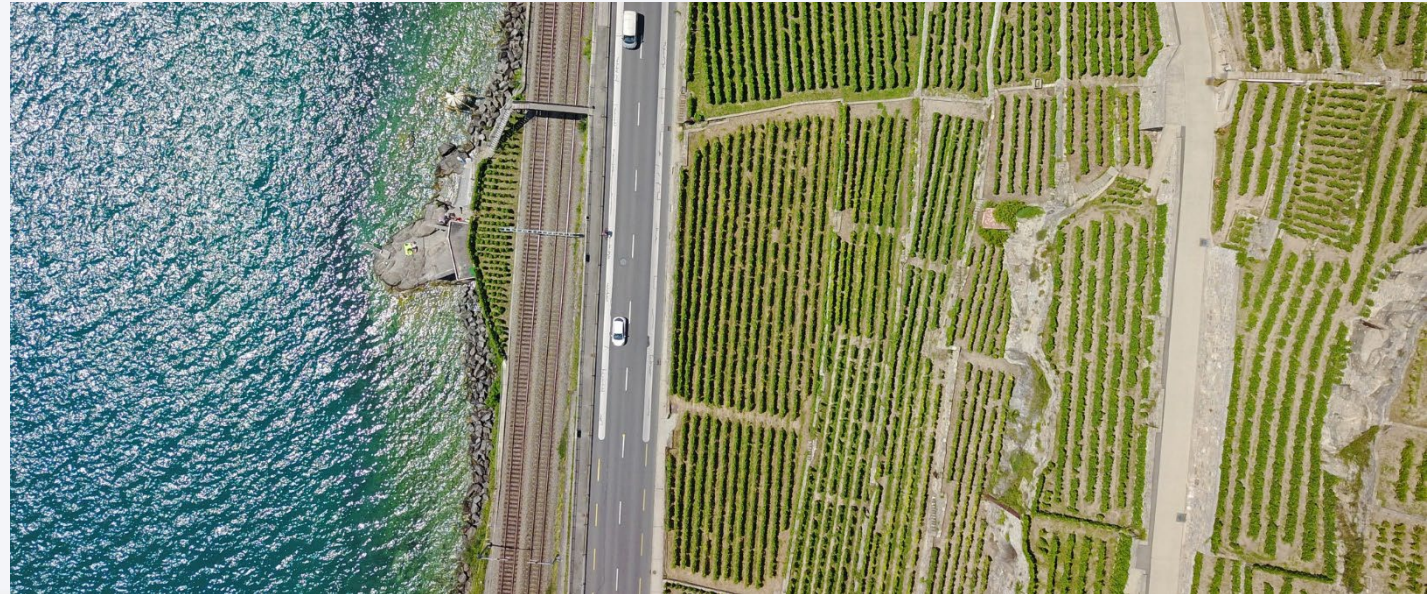
## Opportunities

- research in the fields of environmental sciences and humanities, especially applied ethics and philosophy
- Job opportunities include the fields of environmental administration, environmental education and public institutions



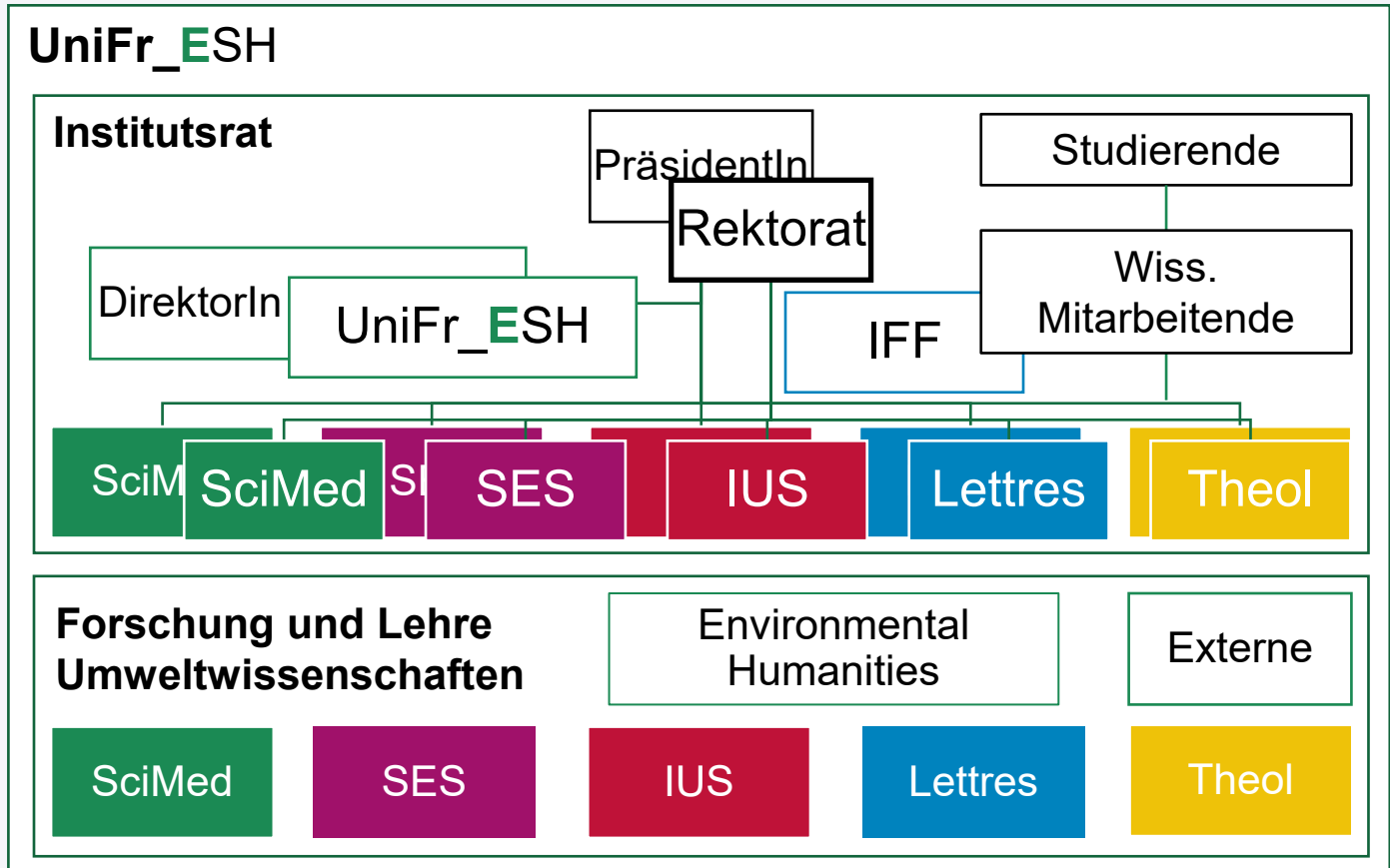
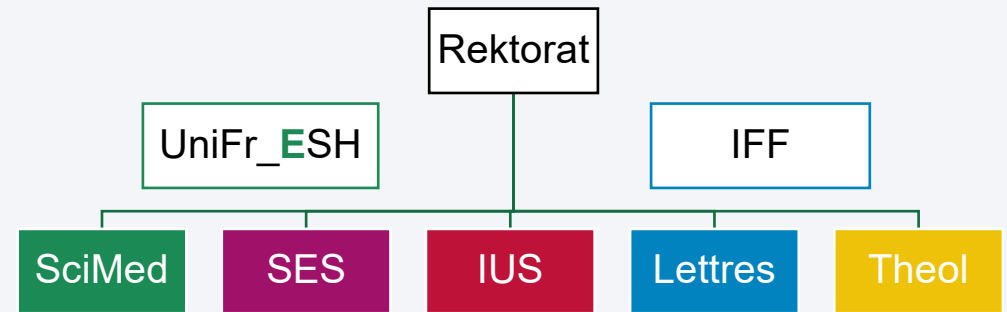


# WHO WE ARE & WHAT WE DO



# UNIVERSITY OF FRIBOURG ENVIRONMENTAL SCIENCES & HUMANITIES INSTITUTE

## UniFR\_ESH Institute



# TEAM UNIFR\_ESH INSTITUTE

## Teaching and scientific management

- Prof. Ivo Wallimann-Helmer (Director)
- **Dr. Angela Martin / Dr. Dominic Roser / Simon Kräuchi / Ilias Voiron** (Assistants to teaching and research)
- Tristan Katz / Shea McBride / Simon Kräuchi / Ilias Voiron (PhD students)
- Rébecca Greber, Lucie Monney (Tutors)

## Administration and Student Advisory

- Astrid Kaiser



# RESEARCH PROFILE ENVIRONMENTAL HUMANITIES

Current research is oriented towards **questions of justice** and conceptual questions on the **differentiation of responsibilities** in dealing with environmental challenges.

- **Environmental justice in interdisciplinary contexts:** fair differentiation of responsibilities for the implementation of environmental measures and distribution of environmental risks.
- **Institutions for a sustainable environmental policy:** institutional structures for ensuring a sustainable, efficient and effective environmental policy.
- **Ethical decision-making for environmental practice:** implementation of environmental and climate policy measures.



# ADMINISTRATION OF STUDIES



# STUDENT ADVISORY

- Please always check **our homepage** first: [www.unifr.ch/env](http://www.unifr.ch/env)
- **E-mail contact *only***: [environment@unifr.ch](mailto:environment@unifr.ch)

## Personal consultation

Every **Tuesday 13.30-16.00pm** (or by arrangement)

Astrid Kaiser, Room 3.325, PER14

## Consultation hours Prof. Wallimann-Helmer

By arrangement, please send your request by mail to:  
[environment@unifr.ch](mailto:environment@unifr.ch)

## Documents, information and important communications

- <https://moodle.unifr.ch/course/index.php?categoryid=37>
- The code of the teaching unit is always set as the password (e.g. SSE.00230 for Principles of Environmental Ethics)
- The login is also possible with the account of the University of Bern (Switch AAI)

# COURSE ENROLLMENT

- On [my.unifr.ch](https://my.unifr.ch)
  - Deadline (Faculty of Science and Medicine): 18 October 2024
- Please note that each faculty has its **own registration deadlines.**

# EXAM REGISTRATION

- On [my.unifr.ch](https://my.unifr.ch)
- Deadline (Faculty of Science and Medicine):  
25.11.24 – 13.12.24 (Winter session 2025)
- Please note that each faculty has its **own registration deadlines**.
- In some faculties, registration for the course includes registration for the examination.



# DECLARATIONS

- Please sign the **Declaration on scientific integrity:**  
<https://www3.unifr.ch/scimed/en/integrity>
- For women only: Please sign also the **Declaration concerning pregnancy and breastfeeding:**  
<https://www3.unifr.ch/scimed/en/studies/rules/pregnancy>

# STRUCTURE OF THE PROGRAMM

Workshop on supporting courses



# STRUCTURE OF THE PROGRAM

- The MSc in **Environmental Sciences and Humanities** educates generalists in environmental sciences with a special competence in the environmental humanities and ethics.
- The program divides into 6 Modules, supporting courses and the master thesis (2 years, 120 ECTS in total):
  1. **Environmental Humanities and Ethics**
  2. **Geosciences**
  3. **Environmental Biology**
  4. **Environmental Law**
  5. **Sustainable Economy**
  6. **Humanities and Theology**

**Supporting Courses & Master Thesis**

# ENVIRONMENTAL HUMANITIES, HUMANITIES AND THEOLOGY

## Environmental Humanities (18 ECTS)

- Humanities approaches to environmental challenges

## Humanities and Theology (6 ECTS)

- Extended humanities competences

*For the current list of courses please refer to the most recent study plan!*

# SCIENCE MODULES

## **Geosciences (18 ECTS)**

- Key methods in human and physical geography, and in earth sciences.

## **Environmental Biology (18 ECTS)**

- Key issues in biology relevant for environmental governance.

*For the current list of courses please refer to the most recent study plan!*



## **Sustainable Economy (9-10,5 ECTS)**

- Variable concerns of sustainability in economics

## **Environmental Law (10 ECTS)**

- Key legal knowledge for environmental governance

*For the current list of courses please refer to the most recent study plan!*

- Some courses in **law** are «block courses»
- That means they take place the first 3 weeks of the semester (this can cause many overlaps)
- The inscriptions are very early and places are limited (25)
- The deadlines for the inscription are here <https://www.unifr.ch/ius/fr/etudes/coursexamens/infocours/#:~:text=Dates%20pour%20l'inscription%20aux%20cours&text=L'in%20scription%20se%20fait%20la,%C3%A9tudiant%20De%20myunifr.ch.>

<https://www.unifr.ch/ius/fr/etudes/coursexamens/infoexamens/>

- Some are biennial, once again, check all informations on [www.unifr.ch/timetable](http://www.unifr.ch/timetable) !

## Environmental Law (10 ECTS)

- Key legal knowledge for environmental governance

# SUPPORTING COURSES AND MASTER THESIS

## Supporting Courses (9,5 -11 ECTS)

- Choice of courses agreed with the study advisor to **compensate for competences** not acquired at Bachelor level

*Deadline: end of 4<sup>th</sup> week of semester.*

## Master Thesis (30 ECTS)

- **Interdisciplinary analysis** of an environmental challenge with a focus on ethics.
- Regular **discussions and feedback** at the Environmental Humanities Colloquium.

# CHOICE OF COURSES AND SUPPORTING COURSES

- **Elective courses** should be taken at the level of competence: **only follow courses at master level if** you know the basics from your Bachelor studies.
- **Supporting courses** must be chosen from the lists of **elective courses**.
- Goal is to **acquire missing competences** from previous studies.
- **Rules of thumb:**
  - **Natural scientists** take courses in humanities, economics & law
  - **Economists and lawyers** take courses in natural sciences
  - **Social scientists** (e.g. international relations / political sciences) take courses in natural sciences & humanities
  - **Humanists** take courses in natural sciences

# SUPPORTING COURSES

- Procedure on Moodle:

<https://moodle.unifr.ch/course/view.php?id=248286>

- Please fill in form 1 until **end of 4<sup>th</sup> week of semester.**



# SUPPORTING COURSES

## S'inscrire à des cours

Semestre d'automne 2022

- You might need to register to the course under «additional teaching in...»
- At the end of the semester, once the credits are acquired : you have to transfert the credits in the supporting courses module !
- Go on your [www.myunifr.ch](http://www.myunifr.ch) page and ask for a «credit transfer»
- Select the course and select in which module the credits should be counted
- You will receive a confirmation in a few days

**Filtres**

Plan d'études *	MSc en Sciences de l'environnement et humanités environnementales [MA] 120
Semestre *	MSc en Sciences de l'environnement et humanités environnementales [MA] 120
Domaine d'études	Cours de langues
	Projets d'auto-apprentissage
	Enseignement complémentaire en Théologie
Type de cours	Enseignement complémentaire en Droit
Langue	Enseignement complémentaire en SES
	Enseignement complémentaire en Lettres
Structure des études	Enseignement complémentaire en sciences
Mode d'évaluation	Compétences numériques

### Examens / résultats

Examens

Résultats et validation

Transferts de crédits

Remise de diplômes

# OTHER GENERAL INFORMATIONS

- The schedules of all courses are on [www.unifr.ch/timetable](http://www.unifr.ch/timetable)
- **A lot of courses are biennial / on announcement only !!!!**
  - If one course does not appear when you research it, do not forget to check if it appears the year after

Same when you are interested in a course but want to take it the year after, do not forget **to check on *timetable*** if it is possible !

To check : select the appropriate semester on timetable

Semestre

SA-2022 x	SP-2023 x
SA-2023 x	SP-2024 x
SA-2022	
SP-2023	
SA-2023	
SP-2024	
SP-2022	



WILKOMMENSTAGE

# FACHSCHAFT DER GEOWISSENSCHAFTEN

**13.09.24 – PER 07, 1.309 / PER14,  
226**



# AGEF? FACHSCHAFT (=FS)? COMITÉ?

AGEF → „Allgemeine Studierendenschaft der Universität Freiburg“, die die Aufgabe hat, die Interessen der Studierendenschaft zu **vertreten** und zu **verteidigen**, und darüber hinaus verschiedene Dienstleistungen erbringt

FS → die sich aus **allen Studierenden eines Studienbereichs zusammensetzt**. Jede/r Studierende gehört also **mindestens einer FS** an und hat die Möglichkeit, sich in dieser zu engagieren. Alle FS arbeiten bei verschiedenen Themen wie der Wahl der Professorinnen und Professoren, den Reglementen oder den Prüfungsmodalitäten mit der jeweiligen Fakultät zusammen

Vorstand → An der Spitze jeder FS steht ein **von den Mitgliedern der FS gewählter** Vorstand, dessen Aufgabe es ist, die Interessen der Kolleginnen und Kollegen in den **verschiedenen Organen** der Universität (Departements-, Instituts- und Fakultätsräte, Kommissionen) und der AGEF (Studierendenrat, Kommission) zu **vertreten** und zu **verteidigen**



# ROLLE DES FS-AUSSCHUSSES?

➤ Repräsentieren Sie auf der Ebene des:

## **Universität:**

- Fachbereichsrat → Einige Mitglieder des FS (in der Regel der Vorsitz) treffen sich mit den Professorinnen und Professoren des Fachbereichs, um aktuelle Angelegenheiten zu besprechen
- Fakultätsrat → die gewählten Vertreter der einzelnen FS treffen sich, um mit den Professoren sowie den Mitgliedern des Dekanats der Fakultät über Angelegenheiten der Fakultät zu diskutieren

## **AGEF:**

- Studierendenrat → die gewählten Vertreter/innen jeder FS treffen sich, um AGEF-Angelegenheiten unter Studierenden zu besprechen
- Veranstaltungen wie Konferenzen, Debatten, Partys und Ausflüge mithilfe des Budgets, das wir jedes Jahr von der AGEF erhalten, organisieren





# AKTIVITÄTEN?

- Willkommens-Apéro
- GeoFondue
- Weihnachtsapéro
- Filmabend
- Cryosphere-Wochenende
- Ausflüge



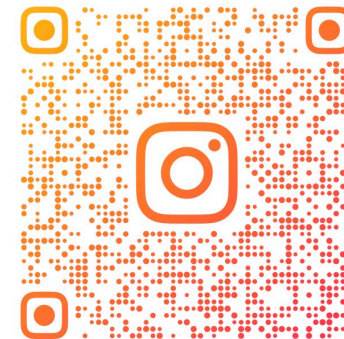
Fachschaft der Geowissenschaften





# LETZTE INFORMATIONEN

- Kontakt → [fs-geo@unifr.ch](mailto:fs-geo@unifr.ch)
- App UniFr → UNIFR Mobile 
- Hochschulsport → Kurse und Fitnessräume
- Centre Fries → Von Studierenden geführtes Kulturzentrum der Universität Freiburg
- Erstellen Sie eine Whatsapp-Gruppe!



@CENTREFRIES

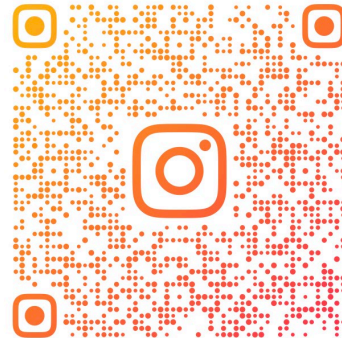




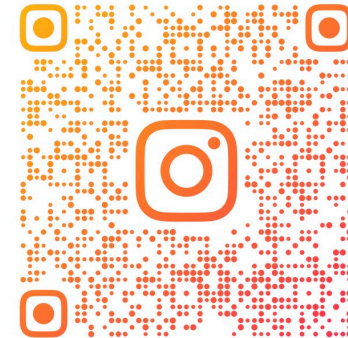
# KOMMENDE VERANSTALTUNGEN

- StartingDays → 16.09.24 **gratis-Goodies!**
- Willkommens-Apéro → 26.09.24
- AG → 03.10.24

Sie werden alle Informationen per E-Mail ([fs-geo@unifr.ch](mailto:fs-geo@unifr.ch)) und über unsere Instagram-Seite erhalten



@FSGEOSCIENCESUNIFR



@AGEFRIB

# TO CONCLUDE:



Invitation to the traditional  
apéro of EnvSciHum at 4pm  
PER14, Cafétéria La Pomme